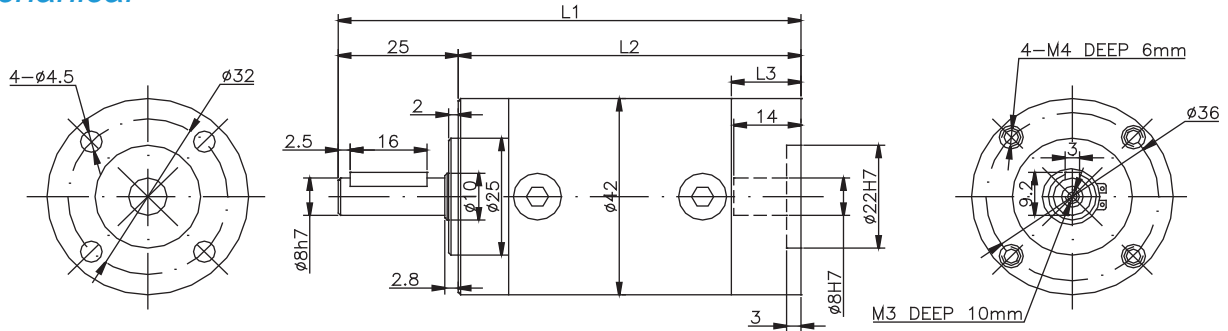


MGH042 Planetary Gearbox



Mechanical



GERABOX

Specifications

No. Of Stages	1 Stage Reduction	2 Stage Reduction	3 Stage Reduction
Gearing Efficiency	90%	81%	73%
Max. Radial Force	160N	230N	300N
Max. Axial Force	50N	80N	100N
Peak Torque	3 Times Rated Torque		
Working Temperature	-10°C~+80°C		
Lubrication Mode	Lifetime Lubrication		
Mounting Mode	Any Mounting		
Recommend Input Speed	3000RPM		
Input And Output	Same Direction		
Gearbox Length L1	78.1mm	96.4mm	114.7mm
Box Length L2	53.1mm	71.4mm	89.7mm
Rear Cover Length L3	14.5mm		

First Planetary Material		1 Stage Reduction	2 Stage Reduction	3 Stage Reduction
Transmission Torque	Plastic POM	0.7Nm	2.5Nm	15Nm
	Metal 40Cr	3Nm	7.5Nm	15Nm
Noise	Plastic POM	45dB(A)		
	Metal 40Cr	60dB(A)		

Gear Ratio

1 Stage Reduction	2 Stage Reduction	3 Stage Reduction	
3.65	13(13.3)	49(48.63)	188(188.2)
5.36	20(19.5)	71(71.4)	206(206.3)
6.55	24(23.9)	87(87.2)	248(247.9)
8.63	29(28.7)	105(104.8)	272(271.8)
	31(31.5)	115(114.9)	281(281)
	35(35.1)	128(128.1)	303(302.9)
	43(42.9)	154(154)	370(370.2)
	46(46.2)	157(156.6)	399(399.2)
	56(56.5)	169(168.8)	489(488.8)