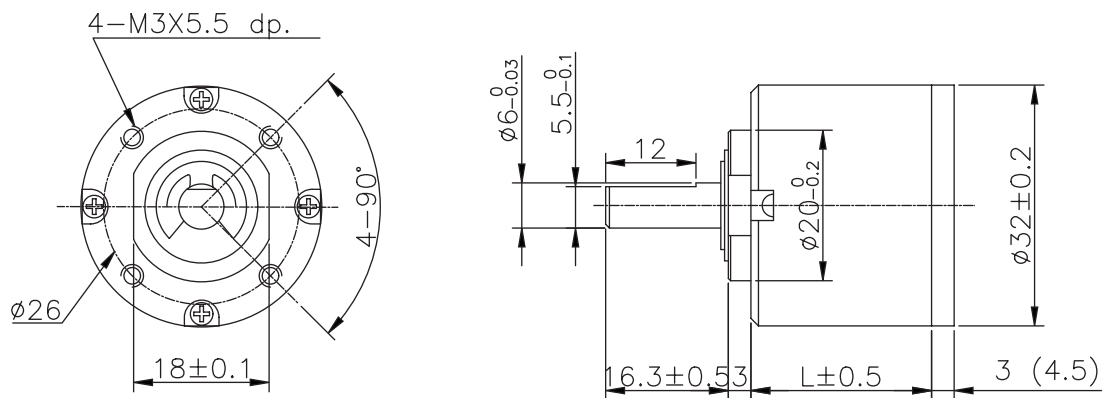


Planetary Gear IG - 32



Housing material	Metal	Backlash, at no- load	$\leq 2.5^\circ$
Bearing at output		Sleeve bearings	Ball bearings
Radial load (10mm from flange)		≤ 3 kg	≤ 3.5 kg
Shaft axial load		≤ 2.5 kg	≤ 2.5 kg
Shaft press fit force , max.		≤ 10 kg	≤ 10 kg
Radial play of shaft		≤ 0.05 mm	≤ 0.04 mm
Thrust play of shaft		≤ 0.3 mm	≤ 0.3 mm

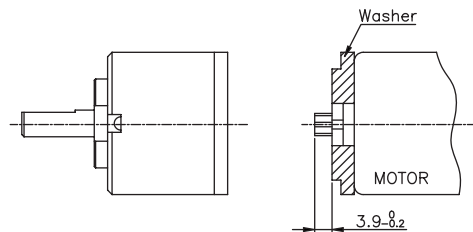
Mechanical Size



Pinion Specification

Module	0.5		
No.of teeth	11	17	8
Pressure angle	20°		
Hole diameter	2.28, 2.48, 2.98, 3.16	2.28	
Reduction ratio	5, 19, 27 71, 100, 139 264, 516, 721	4, 14 51, 189	35 939

Motor Installation



Gear ratio Specification

Reduction ratio	Exact reduction ratio	Rated torque (kg-cm)	Max momentary Torque (kg-cm)	Efficiency (%)	L (mm)	Weight(g) Sleeve bearings	Weight(g) Ball bearings
4, 5	3, 5	2.0	6.0	80	17.6	102	101
14, 19	13, 19	4.0	12.0	70	24.0	122	121
27, 35	26, 34	6.0	18.0	70	24.0	122	121
51, 71	50, 71	8.0	24.0	60	30.4	147	146
100	99	10.0	30.0	60	30.4	147	146
139	139	10.0	30.0	60	30.4	147	146
189	188	12.0	36.0	50	36.8	173	172
264	263	12.0	36.0	50	36.8	173	172
516	515	12.0	36.0	50	36.8	173	172
721	720	12.0	36.0	50	36.8	173	172
939	939	12.0	36.0	50	36.8	173	172

Operating relative humidity 20%~85%RH Operating temperature range -10°C~+60°C