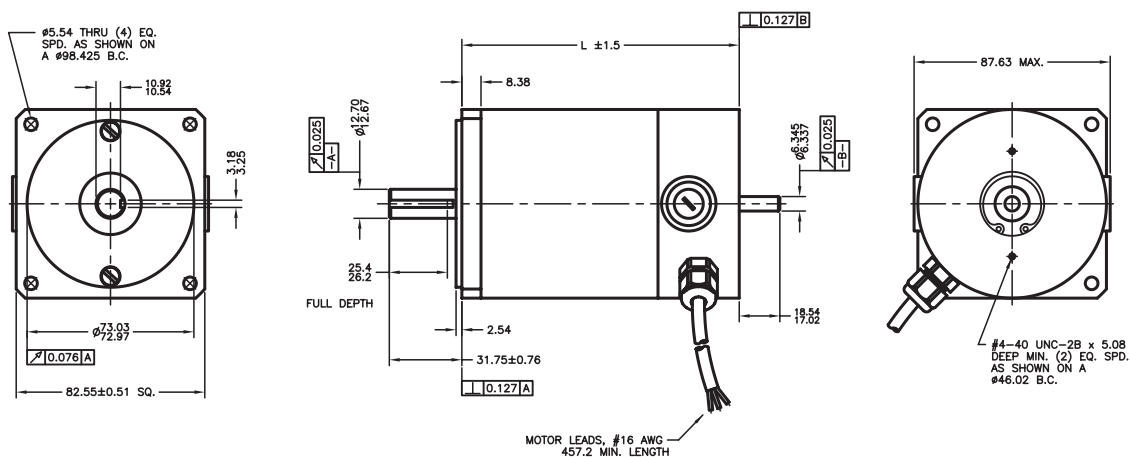


DC Brush Servo Motor

MB080FG



Mechanical



Features

- Nema 34 Mounting
- Max. Voltage 90V and Max. Speed 6000rpm
- Insulation Class: F
- With UL certificate per request
- Continuous Torque from 0.5Nm to 1.58Nm
- 2Pole Ceramic Magnet Structure with Low Cogging
- High Quality ball bearings in both front and rear endcap
- Continuous Duty
- Externally Accessible Brush Structure

Options

Optical Encoder, Modular or Bearing Type

Performance data:

Specification		MB080 FG200	MB080 FG400	MB080 FG500	MB080 FG600	MB080 FG450
Continuous Stall Torque	Lb.in	4.60	7.43	10.62	13.98	7.43
	Nm	0.52	0.84	1.20	1.58	0.84
Peak Stall Torque	Lb.in	23.36	37.44	53.10	70.27	37.44
	Nm	2.64	4.23	6.00	7.94	4.23
Max. Terminal Voltage	V	90	90	90	90	90
Max. Speed	rpm	6000	4400	4800	3700	6000
Terminal Resistance	Ohms	1.43	1.83	1.05	1.14	0.91
Inductance	mH	3.90	5.42	2.93	3.51	2.31
Torque Constant	oz.in/Amps	16.91	27.05	24.88	32.19	18.03
	Nm/Amps	0.12	0.19	0.17	0.23	0.13
Back EMF Constant	V/Krpm	12.5	20.0	18.4	23.8	13.36
Rotor Inertia	oz.in.sec ²	0.019	0.033	0.048	0.063	0.033
	Kg.cm ²	1.34	2.33	3.39	4.45	2.33
Friction Torque	oz.in	5.0	6.0	7.0	8.0	6.0
	N.cm	3.53	4.24	4.94	5.64	4.23
Damping Torque	oz.in/Krpm	0.8	1.0	1.2	1.4	1.0
	N.cm/Krpm	0.56	0.71	0.85	0.99	0.71
Weight	Lb	5.6	7.2	8.8	10.5	7.2
	Kgs	2.54	3.27	3.99	4.77	3.27
Length	mm	121.4	146.8	172.2	197.6	146.8