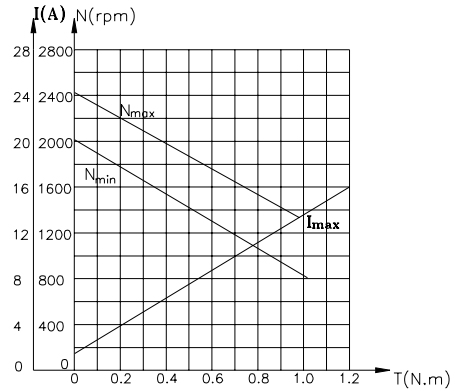
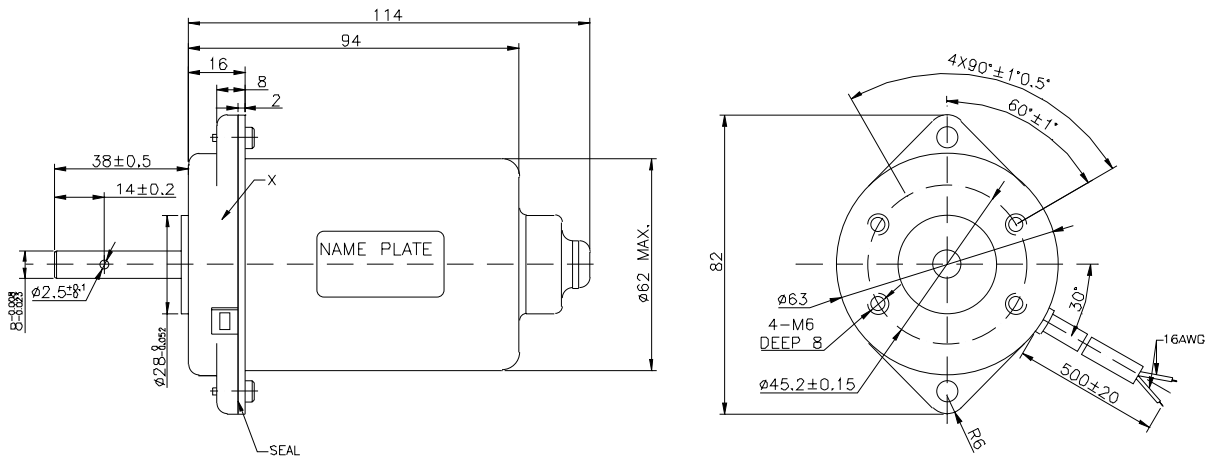


DC Brush motor

MB062FD100



Mechanical



Typical Performance:

- Rated at 24V DC
- No-Load 2200rpm @0.6A
- Insulation Class: B ; Protection Class: IP 30
- Front endcap: Ball bearing; Rear endcap: Sleeve bearing.
- Short Duty: 5 minutes

Continuous Duty

- Lifetime: 1500 hours
- Rated Torque: 0.2Nm
- Rated Speed: 1800rpm @3.5A
- Max. Torque: 0.8Nm

Applications: Pumps