

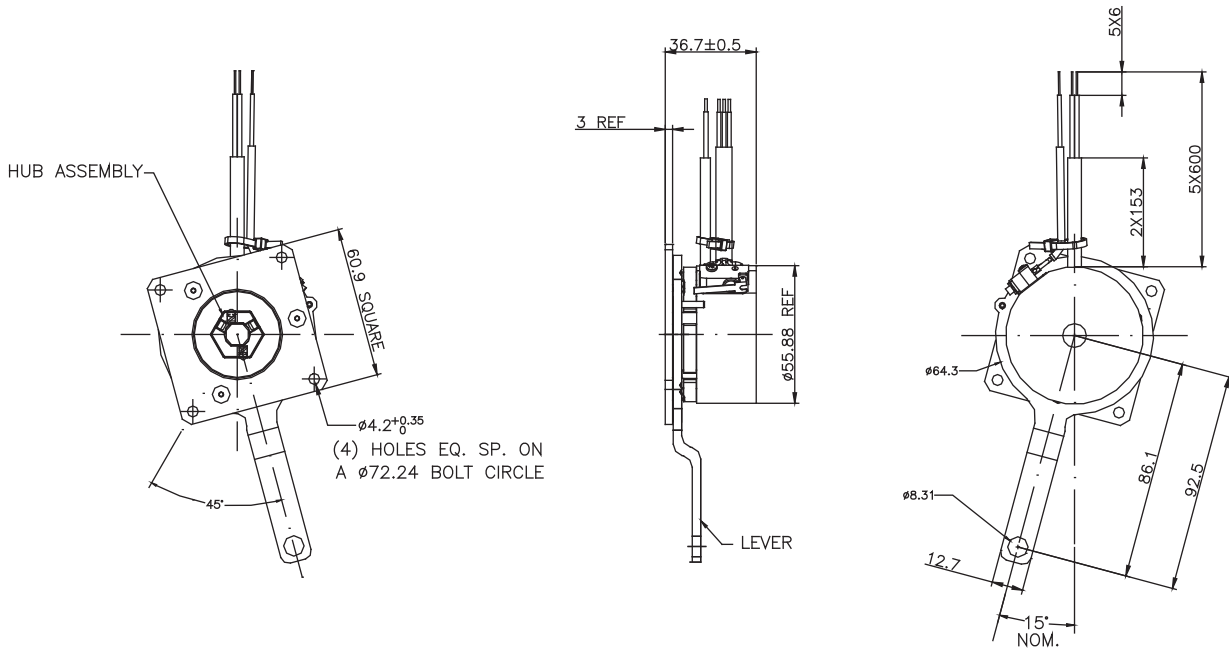
MSRA061 Spring Applied Brake



General Information

- Insulation Class B
- Zinc plating housing
- Long life
- Special application on request

Mechanical



BRAKE

Specifications

Voltage (VDC)	Resistance (OHMS)	Current (A)	Static Torque (Nm)	Inertia (g.cm ²)	Weight (g)
12	16.7	0.72	2.26	0.053	450
24	65	0.37	2.26	0.053	450
48	250	0.19	3.95	0.053	700

Implication For Name

MSRA 061- X X X X X

