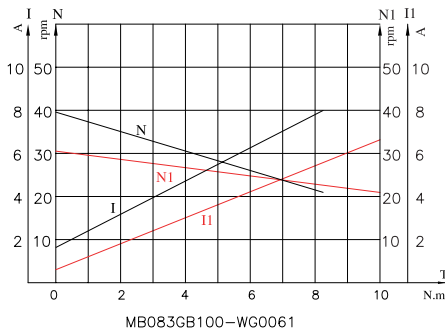
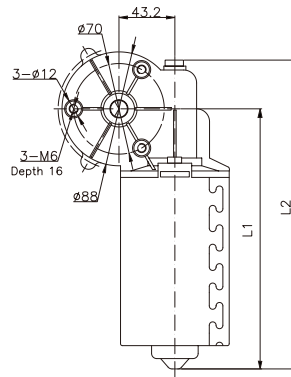
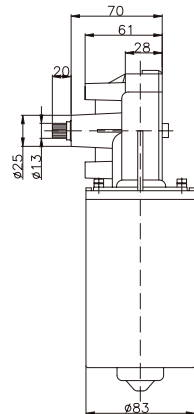


# WG series gearmotor

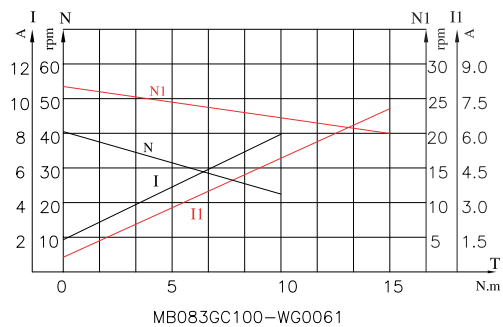


- Aluminum Diecasting Gearbox
- Rolled Steel Housing Construction
- Dual Speed Design
- Dynamically Balanced Rotor

## Mechanical



---BLK High Speed,



---RED Low Speed

## Performance Data at Rated 12V DC

Part No.	No-Load Speed (rpm)	Rated			Peak Torque (N.m)	L1 (mm)	L2 (mm)
		Speed (rpm)	Current (A)	Torque (N.m)			
MB083GB100-WG0061	40	28	5.6	5.2	8.5	182	225
	31	24	4.8	7	10		
MB083GC100-WG0061	40.5	28	5.8	6.5	10	199	235
	27	21.5	6.3	13.2	15		